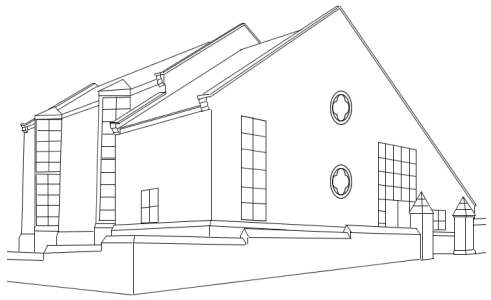
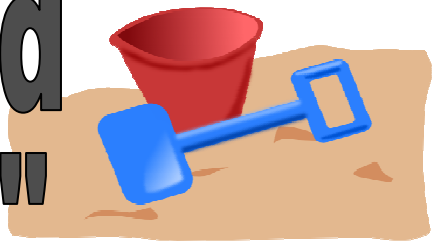


Bingley Methodist Church



Flower Festival

"A Grand
Day Out"

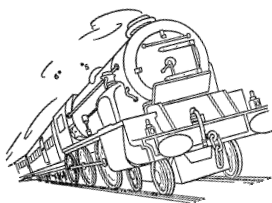


Saturday 24 August - 10 am to 4 pm
Sunday 25 August - 12 noon to 6 pm
Monday 26 August - 10 am to 4 pm

1. "Watching Bradford City play at Wembley" - Joyce Dykes
2. "A happy day in Disneyland" - Shirley Dixon, sponsored by Joan Wright
3. "Going to see Strictly Come Dancing" - Shirley Dixon
4. "Tea at the Palace" - Victoria Raw
5. "The Chelsea Flower Centenary Show" - Joyce Dykes



6. "Santa Special on the Severn Valley Railway" - Katherine Watson
7. "The Rugby League Cup Final" - Lindsay Schofield
8. "A day walking in the Dales" - Shirley Dixon, sponsored by Muriel Freeman

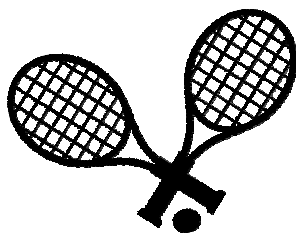


9. "Activity Day" - Rainbows and Brownies
10. "The Tour de France" - Lindsay Schofield
11. "A relaxing day's fishing" - Sunday School
12. "A visit to Scotland" - Shirley Dixon, sponsored by Millie Emmerson



Please continue your Grand Day Out experience by visiting our upstairs rooms: to see the displays by the Art Group and exhibits which will remind you of days out.

13. "Wallace and Grommit's Grand Day Out" - Joan Milner
14. "A day at Harlow Carr" - Barbara Walls
15. "Fountains Abbey" - Maureen Maskell
16. "A day on the canal" - Ann Walls
17. "Enjoying the fashion at Ladies Day at Ascot" - Shirley Dixon



18. "Enjoying the tennis at Wimbledon" - Shirley Dixon, sponsored by Andrea Scargill
19. "Afternoon tea at The Ritz" - Rachel Slater and Susan Atherton
20. "Sun, sea and a good book" - Jean Varley

21. "A Grand Day Out" - Rosemary Nash
22. "The end of a Grand Day Out" - Pam Butterfield



Hot lunches served from 11.30 am
on Saturday and Monday.
Light lunches available on Sunday.

Would you like to make a donation?

giftaid it

Use Gift Aid and you can make your donation worth more.

For every £1 you give to us, we get an extra 25 pence from the Inland Revenue.

Special Gift Aid envelopes are on the tables in the hall and near the donation jars. Please remember to fill in the Gift Aid Declaration on the back of the envelope so we can claim back the tax.

Come and join us!

Sundays: We worship at 10.30 am each Sunday Morning. Sunday Club for young people from the age of 3 upwards is held at the same time. Crèche facilities are also available.

Wednesdays: We are open for coffee from 10 am to 12 noon. From 12 noon lunches are served to people of **all** ages.

Saturdays: We are open for coffee from 10 am to 12 noon.

Sunday Worship this weekend:

10.30 am - Rev Rosemary Nash

6.00 pm - "Songs of Praise" Service

www.bingleymethodistchurch.org.uk