

Monday 9 October

10.15 am Prayer and Meditation in the Quiet Room

Tuesday 10 October

7.30 pm Badminton

Wednesday 11 October

10.00 am Coffee Morning

12 noon Lunches Served

7.30 - 10.00 pm Sequence Dancing

Friday 13 October

6.30 - 8 pm Fun Evening (follow up to Holiday Club)

Saturday 14 October

10.00 - 12 noon Coffee Morning

7.30 pm Hall Royd / Belleplate Players Concert

Sunday 15 October

10.30 am Service led by Miss Diane Greenwood

Stewards Bryn Morgan and Anne Gill*Pianist* Roy Hemsley*Door* Mary and Roy Widdows*Coffee* Pam Helyer and Pam Downs*Flowers* Sheila Palmer

6.00 pm Circuit Service at Saltaire Methodist Church

Tuesday 17 October

7.30 pm Badminton

Wednesday 18 October

10.00 am Coffee Morning

12 noon Lunches Served

7.30 pm Bible Fellowship Meeting at 6 Villa Grove

7.30 - 10.00 pm Sequence Dancing

Saturday 21 October

10.00 - 12 noon Coffee Morning

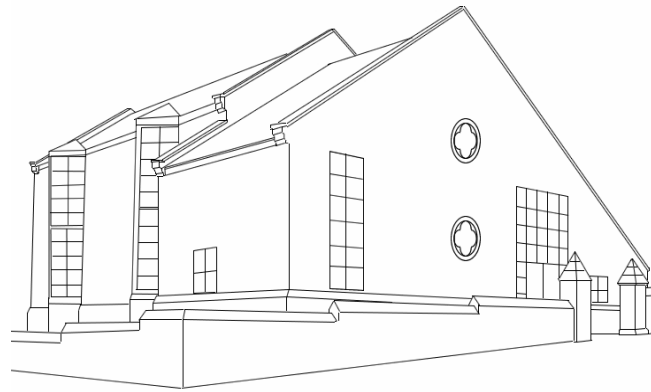
Sunday 22 October

10.30 am Service led by Mr David Varley

Stewards Joyce Dykes and Jean Varley*Pianist* Roy Hemsley*Door* Barbara Beardmore and Craig Rigby*Coffee* Lindsey Butler and Lindsay Schofield*Flowers* Joan Moore

6.00 pm Circuit Service at Victoria Hall, Saltaire

Items for Sunday 15 October's News Sheet to be handed to Bryn Morgan, 551805, by Tuesday 10 October at the latest.



Bingley Methodist Church

Minister: Rev Ruth Parry
Telephone 01274 563227

Welcome!

Sunday 8 October 2006

10.30 am Harvest / All Age Service led by
Rev Ruth Parry

Stewards Jean Varley and David Varley

Pianist Anthony Butterfield

Door Maureen and Bob Maskell

Coffee Catharine Sykes and Mignon de Jager

Flowers Katherine Watson

We welcome you to our church today. We sincerely hope that you will receive a blessing from the service. If you would like a visit from our Minister, or if our Church Stewards can help in any way, please let us know.

Coffee and tea will be served following this morning's service, please stay and join us. The **Traidcraft Stall** will be in the dining room after the service.

Concert

Hall Royd Brass Band and the Eldwick Belleplate Players "In Concert" - this Saturday (14 October) 7.30pm, here at Bingley Methodist Church.

Tickets £4 on the door. Proceeds to Hall Royd Brass Band, Eldwick Methodist Church and Bingley Methodist Church.

Prayer for Today

Help us, O Lord,
to come before your throne with holiness.
Quicken our conscience,
enlarge our vision
and increase our faith;
through Christ our Lord.
Amen.

Church Council

The date of the next Church Council meeting has been changed from Monday 9 October to Wednesday 25 October, at 7.30pm. Please note your diaries.

Methodist Homes Sunday (5 November)

On this date, envelopes will be placed on seats, but if you would like any further information there is a poster in the foyer and I have also received the Autumn edition of Heart & Soul - there are a few copies on the bookcase in the foyer: please take one. Bryn.

"Seeing the Story"

Saltaire Methodist Church: 8 September to 22 October 2006. Saturday 10am to 4pm. Sunday and Tuesday to Friday 2pm to 4pm. Admission free.

More information about the exhibition of modern Christian art by way of a leaflet are in the foyer. Please feel free to take one.

Methodist Publishing House (MPH)

I have received the following:

- ◆ Autumn Sale
- ◆ Christmas Gifts 2006
- ◆ New and Recent Titles (Autumn/Winter 2006)
- ◆ Biblelands 2006 - Christmas Catalogue (not MPH)

These are on the bookcase in the foyer. If anyone would like to place an order, please see me with your details and I will place one order on behalf of the church.

So that we are not leaving it too late, I suggest we put a deadline of Sunday 22 October for orders.

Please leave the brochures in the plastic wallets and return to the bookcase when you have looked at them. Bryn.

Christian Aid

Antiques Evaluation Evening: at St Wilfrid's Church has raised up to press £476.14 for the charity.

Flag Day in Bingley: held on Saturday 30 September raised £264.54 for the charity.

Thank you to all who supported the events.

Anne, Sheila and John.

Fun Evening

Friday 13 October, 6.30 to 8pm: There will be a Fun Evening as follow up for the Holiday Club. Any 5 - 11 year olds welcome.

Help Please!

Some weeks it is really difficult to think of things or nothing is happening that needs bringing to your attention in the notices, and the last thing you need are continued repeats.

If you can think of anything you might like to share, or anyone we can remember in our prayers, please let me know and I will include them. Bryn.

Church Dinner/Dance

Our now Annual Dinner/Dance will be held on Friday 24 November at St Ives Golf Club. Tickets £25 per head - same as last year.

Anyone wanting tickets please see Jean Varley. Bryn.

Fund for World Mission

A wonderful total of £1232.73 was raised in our church this year for World Mission. This amount was raised in the following way:

Self Denial envelopes	£71.50
Returned tax money on self denial	£12.86
Easter Offering envelopes	£163.00
Returned tax money on Easter	£23.02
Coffee Evening (May)	£100.00
Coffee and Fun Evening (August)	£70.00
Donations for coffee evening etc	£46.50
Contents of Mission Boxes	£535.85
Sale of cakes on Sunday mornings	<u>£210.00</u>
Total	£1232.73

Rosalie and Jean wish to say a big thank you to everyone who supported us in any way in our work for the World Church - we are very grateful for all your help and contributions.

Thank you all once again and God's Blessings to you all.

Rosalie Large and Jean Taylor - World Mission Secretaries.

American States Quiz

After checking all the entries received for the quiz, the winner has been found. Miss Pearl Whitaker of Baildon got all 40 correct answers. Thanks to everyone who took part. (There are still a few answer sheets available!)

Colin and Lindsay.